

MARIANNE PENBERTHY

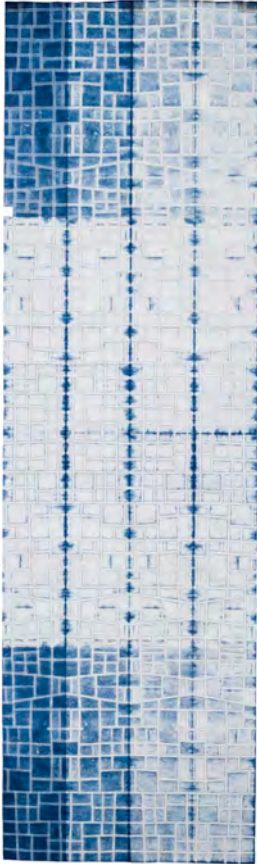
SOLO WORKS
KOREAN BOJAGI FORUM

International Bojagi & Beyond Jeju, Korea 2014





Remnants 2014

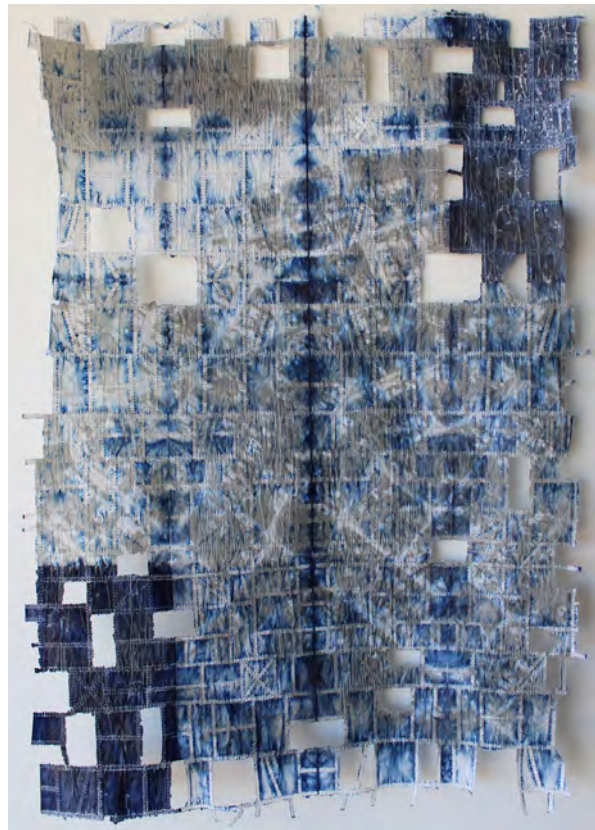


Finding A Way 2014

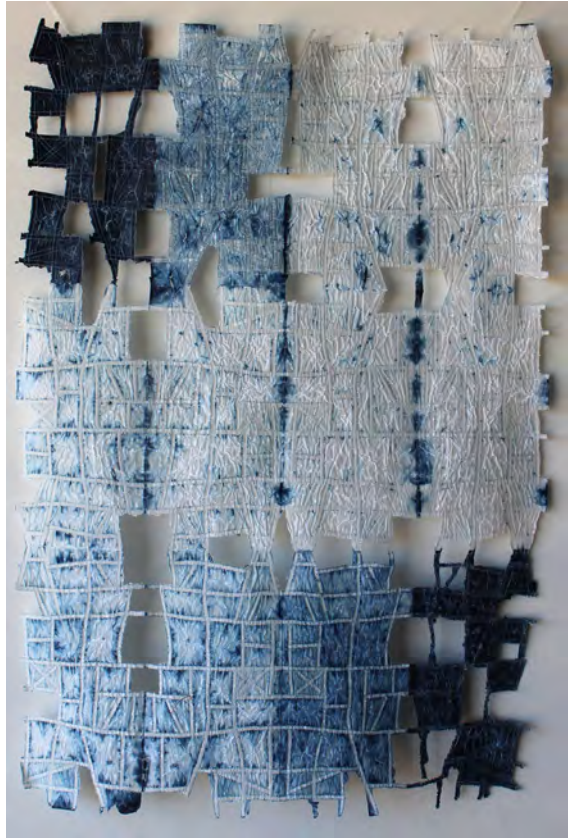


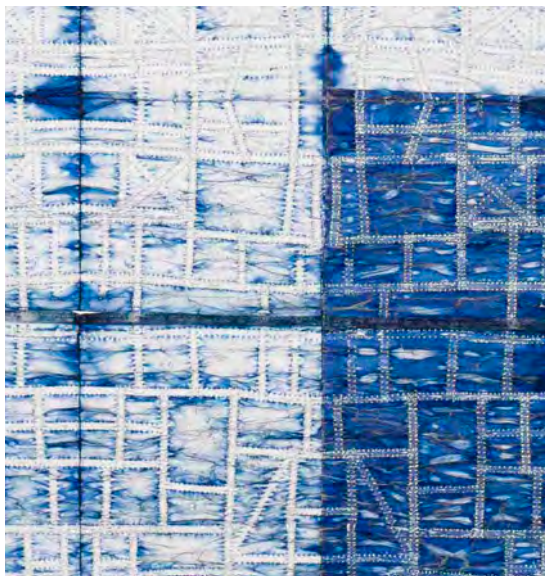
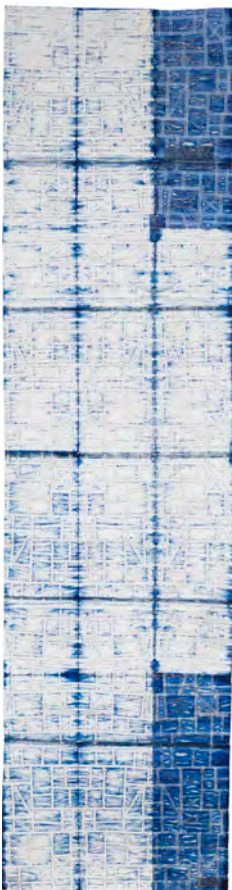
Reconstructed Memory 2014

Tracing Memories 2014



Untraceable 2014

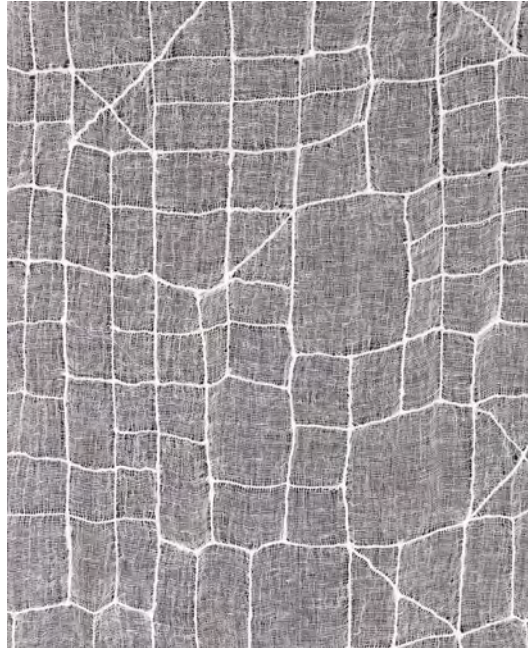
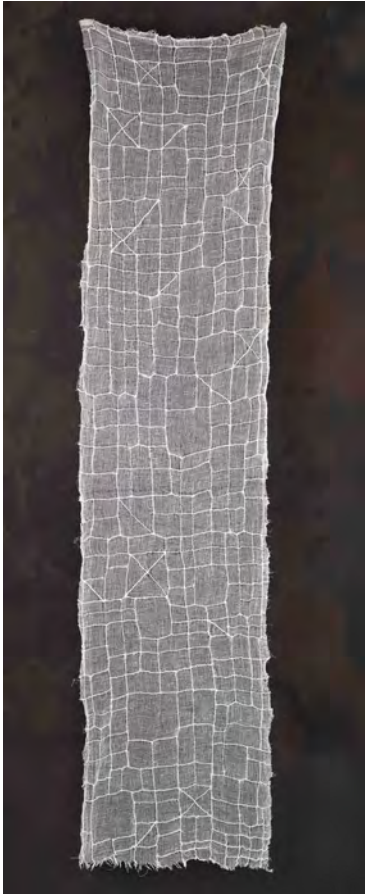




Retrace (left) and detail 2014



Reveal (left) and detail 2014



Unknown Framework (left) and detail 2014



Longing and Belonging 2003

DETAILS OF WORKS

Remnants 2014

52 x 116 cm Textile/Contemporary Bojagi,
Watercolor paper, sandpaper, sand, prints, earth pigment, dirt, dye, tea, hand
stitch, machine stitch, shibori resist.

Image: Karl Monaghan

Finding a Way 2014

46 x 155cm Textiles/Contemporary Bojagi
Mulberry paper, dye, machine stitch.

Image: Karl Monaghan

Reconstructed Memory 2014

45 x 155cm Textile/Contemporary Bojagi
Tracing paper, embroidered words, layered dyes.

Image: Karl Monaghan

Tracing Memories 2014

55 x 80 cm Textile/Contemporary Bojagi
Tracing paper, map image machine stitch, dye

Image: Karl Monaghan

Untraceable 2014

54 x 78cm Contemporary Bojagi
Tracing paper, machine stitch, dye

Image: Artist

Retrace 2014
40 x 158cm Textile Contemporary Bojagi
Tracing paper, dye, machine stitch resist.
Image: Karl Monaghan

Reveal 2014
36 x 158 cm Textile/Contemporary Bojagi
Gauze, pulled threads, machine stitch
Image: Karl Monaghan

Unknown Framework 2014
38 x 160cm Textile/Contemporary Bojagi
Gauze machine stitched.
Image: Karl Monaghan

Longing and Belonging 2003
2m x 2m x 1.1m Textile/Shibori/ Contemporary Bojagi
Silk organza, indigo dye, metal poles, hand stitch, machine stitch
Image: Artist

All images ©Marianne Penberthy 2015

Design by
artpages.com.au